

## Inspection of Prismatic Lithium Ion Batteries for Consumer Electronics

Ultran has performed extensive analysis on prismatic lithium ion battery cells for a number of industries, including consumer electronics.

Analysis was conducted on battery cells with different levels of certain properties, including:

- The distribution of electrolytes
- Charge level
- Gas Voids

Ultran's non-contact ultrasound technology is shown to detect variations in each of the above conditions.

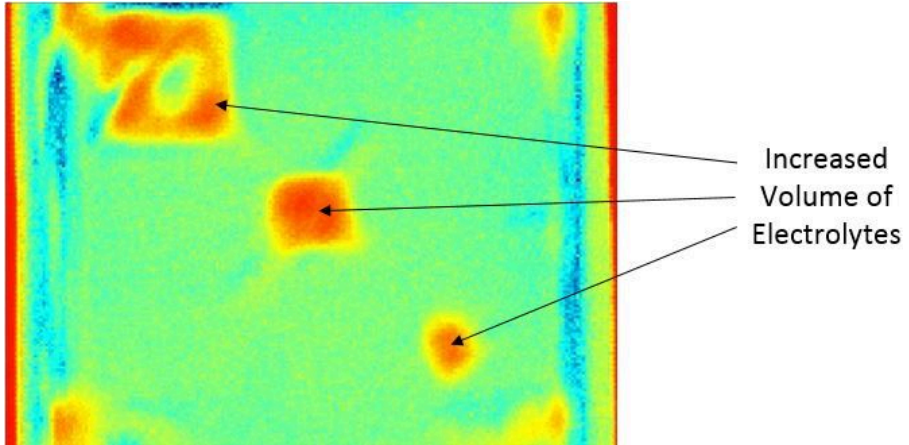
Focused transducers demonstrate the capability to measure localized variations in high resolution.

High frequency analysis depicts minute property variations.



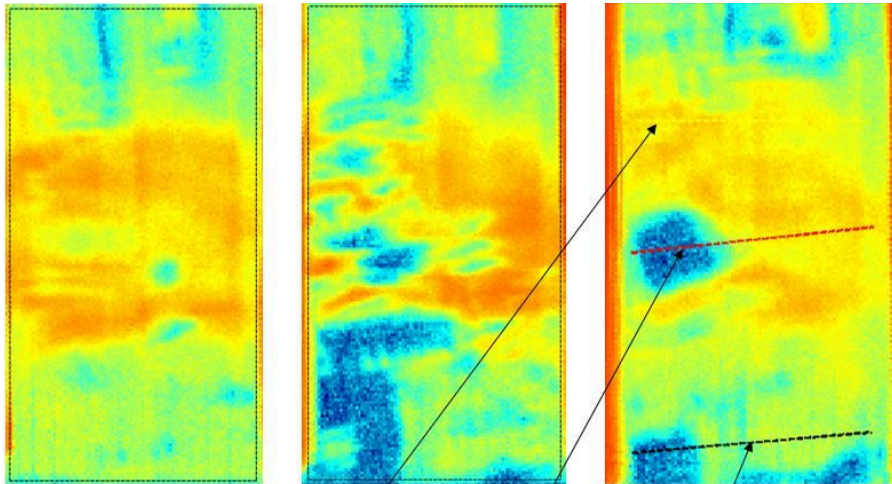
# Prismatic Battery Cells

Battery Cell with Known Regions of Electrolyte Non-Uniformity



## Prismatic Battery Cells

Variations likely due to Gas Voids (blue) and electrolyte distribution (red/yellow)



Line Scan Plot from Right-Side Sample at 3 Regions

